

# APPROACHES FOR PRIORITIZING CARE IN RESPONSE TO COVID-19

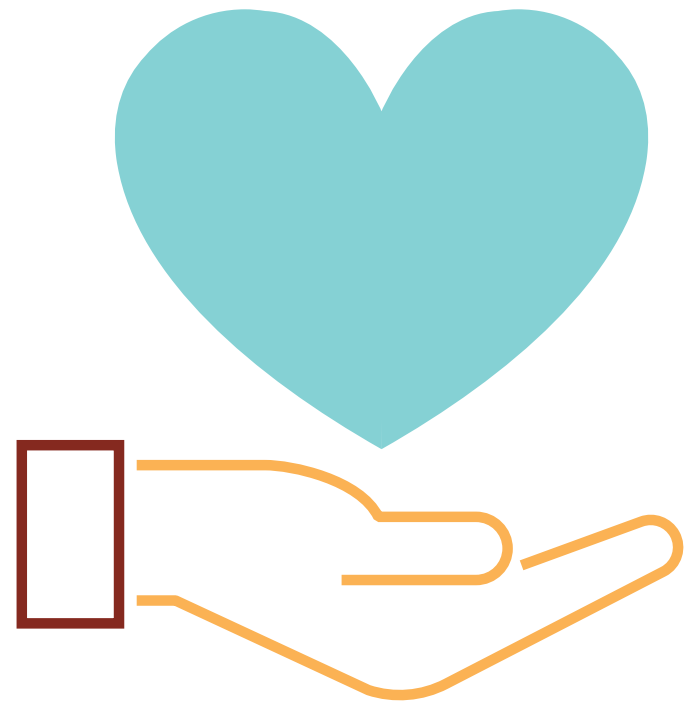
This resource is designed to support dental care teams in identifying patient's health and risk status using in-office and teledental service modalities.

## **For the Front Desk Team:**

Prioritizes patient outreach and provides scheduling recommendations.

## **For the Dental Clinical Team:**

Suggests management and interventions based on health and risk status.



Oral Health Status (including risk factors that affect oral health)	Management Type	Targeted Outreach and Scheduling Approaches	Interventions	Caries Risk Assessment (CRA) Periodontitis Risk Assessment (PRA)
<b>Excellent Oral Health</b> <ul style="list-style-type: none"> <li>No chronic or concomitant disease or disorder</li> <li>No current oral health disease</li> </ul>	Self-management	<b>Teledental Health Promotion/ Disease Prevention (HP/DP) visit:</b>	<ul style="list-style-type: none"> <li>Motivational Interviewing: D9994</li> <li>Caries Risk Assessment: D0601-0603</li> <li>Oral Hygiene Instructions: D1330</li> <li>Nutritional Counseling: D1310</li> </ul> <b>Description:</b> Using motivational interviewing/shared decision-making techniques, craft a home care plan with patients and families to maintain low caries risk, promote oral health and overall health	<b>CRA: Low</b> <b>PRA: Low</b>
<b>Moderate/Good Oral Health</b> <ul style="list-style-type: none"> <li>No chronic or concomitant disease or disorder</li> <li>Active oral health disease (caries, perio)</li> </ul>	Self-management Disease management	<b>Teledental visit*:</b>  <b>*In-office visit: (if needed)</b>	<ul style="list-style-type: none"> <li>Teledental HP/DP above</li> <li>Non-aerosol, low aerosol or minimally invasive procedures<sup>12</sup></li> </ul>	<b>CRA: Low/Moderate</b> <b>PRA: Low/Moderate (or chronic gingivitis as a diagnosis)</b>
<b>Compromised or At-Risk for Oral Diseases</b> <ul style="list-style-type: none"> <li>Active oral health disease (caries, perio)</li> <li>Pregnant patients</li> <li>Chronic or concomitant disease or disorder:               <ul style="list-style-type: none"> <li>Oral cancer, diabetes, inflammatory diseases, and cardiovascular disease</li> </ul> </li> </ul>	Self-management Disease management Urgent dental care	<b>Teledental visit:</b>  <b>In-office visit:</b>	<ul style="list-style-type: none"> <li>Teledental HP/DP as above and schedule in-office visit according to risk</li> <li>Non-aerosol, low aerosol or minimally invasive procedures<sup>1</sup></li> <li>Droplet precautions and aerosol-mitigating engineering and clinical options<sup>2</sup></li> </ul>	<b>CRA: Moderate/High</b> <b>PRA: Moderate or chronic gingivitis/ periodontitis</b>
<b>Poor Oral Health</b> <ul style="list-style-type: none"> <li>Active cellulitis/abscess</li> <li>Pain/swelling</li> <li>Possible infection</li> </ul>	Self-management Disease management Immediate dental care	<b>Teledental visit:</b>  <b>In-office visit:</b>	<ul style="list-style-type: none"> <li>Teledental HP/DP as above and schedule in-office visit according to risk</li> <li>May include prep for in-office and post-operative instructions for in-office visit</li> <li>Non-aerosol, low aerosol or minimally invasive procedures<sup>1</sup></li> <li>Treatment plan with in-office visits scheduled according to low aerosol or mod/high aerosol producing visits<sup>2</sup></li> </ul>	<b>CRA: Moderate/High</b> <b>PRA: High</b>
<b>Emergency or New Dental Patient</b> <ul style="list-style-type: none"> <li>Unknown oral health or health status</li> </ul>	Self-management Disease management Immediate and/or urgent dental care	<b>Teledental visit:</b>  <b>In-office visit: (if needed)</b>	<ul style="list-style-type: none"> <li>Teledental HP/DP as above and schedule in-office visit according to emergency</li> <li>May include prep for in-office and post-operative instructions for in-office visit</li> <li>Non-aerosol, low aerosol or minimally invasive procedures<sup>1</sup></li> <li>Moderate/high aerosol procedures<sup>2</sup></li> </ul>	<b>CRA: Determine</b> <b>PRA: Possibly determine</b>

**<sup>1</sup>Non-aerosol, low aerosol or minimally invasive procedures**

- Preventative:* Exams, hand scaling
- Prevention and Caries Control:* Fluoride Varnish, Silver Diamide Fluoride (SDF), Curodont Repair Fluoride Plus
- Minimally Invasive Dental Procedures or Materials:* GIC sealants, ART + Hall techniques, Non-surgical extractions

**<sup>2</sup>Engineering Controls and Aerosol mitigating in-office clinical/procedural options**

- In-office rinse
- Rubber dam use
- In-room aerosol evacuators and HVAC design
- High speed suction attachments such as Iso-lite
- Minimally invasive dental treatments and products
- Electric handpiece uses in lieu of air-driven high speed handpieces